

## G - 5 b

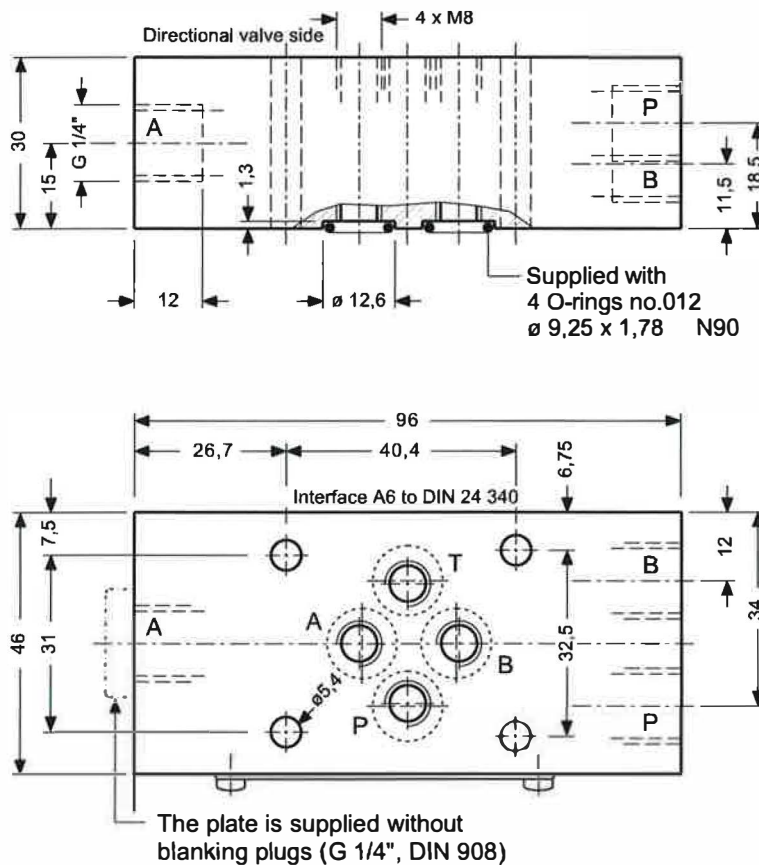
### Modular-mounting Diverter / Tapping Plate, 6 mm

Series SAZ ...

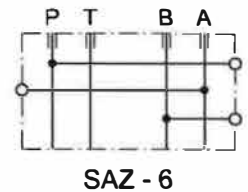
350 bar

- Ports P, A und B = G 1/4"
- Material: steel
- Mass: 0,9 kg
- Interface to ISO 4401 / CETOP R35H size 03, NFPA D03, DIN 24 340 A6

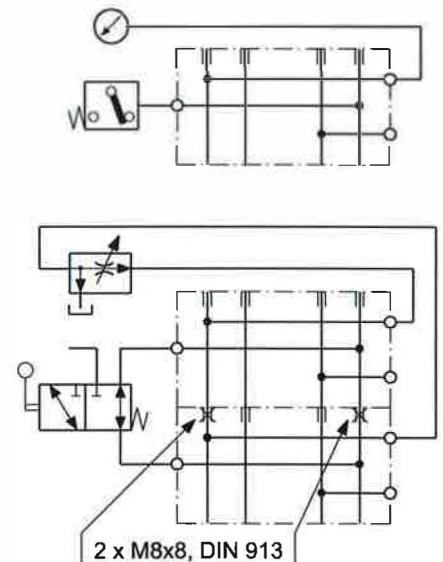
#### DIMENSIONS



#### SYMBOL



#### APPLICATION EXAMPLE



#### DESCRIPTION

The SAZ-6 ... diverter / tapping plate is used to connect control- and / or measuring devices into the valve stack.

All 4 bores P, A, B and T are thro' tapped M8 and can, as necessary, by

plugged with DIN 913, M8 x 8 long grub screws (see lower example for instance).

Please note however, that only 3 lines, P, A and B have G1/4" side connections as shown in the application examples.

Unused side ports must be blanked off with G1/4" plugs (eg. DIN 908) by the user.

Interface sealing is by means of O-rings which are retained in counterbores in the valve body.

info.ch@bucherhydraulics.com

© 2015 by Bucher Hydraulics AG Frutigen, CH-3714 Frutigen

All rights reserved.

Data is provided for the purpose of product description only, and must not be construed as warranted characteristics in the legal sense. The information does not relieve users from the duty of conducting their own evaluations and tests. Because the products are subject to continual improvement, we reserve the right to amend the product specifications contained in this catalogue.

www.bucherhydraulics.com