

AM.5.QF... MODULAR FLOW REGULATOR CETOP 5



AM.5.QF type one way non-compensated throttle valve are fitted with an O-Ring mounting plate which allows its assembly for either input or output regulation. Adjustment is obtained by means of a grub screw or a plastic knob. They are available in the four regulating configurations shown in the hydraulic diagrams.

Max. operating pressure	350 bar
Max. pressure adjustable	250 bar
Flow rate regulation	on 9 screw turns
Max. flow	80 l/min
Hydraulic fluids	Mineral oils DIN 51524
Fluid viscosity	10 ÷ 500 mm ² /s
Fluid temperature	-25°C ÷ 75°C
Ambient temperature	-25°C ÷ 60°C
Max. contamination level	class 10 in accordance with NAS 1638 with filter $\beta_{25} \geq 75$
Weight	3,7 Kg

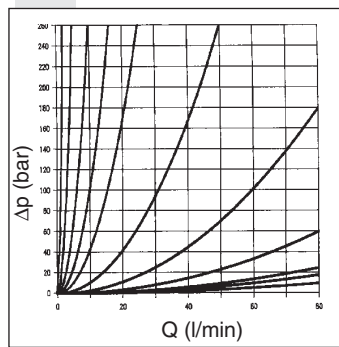
These valves are supplied with related hydraulic scheme. In case of inversion of rated flow direction, turn valve 180° right or left (attention: in this case the label will appear upside down with A and B inverted).

AM.5.QF...
SCREWS AND STUDS CH. IV PAGE 35

ORDERING CODE

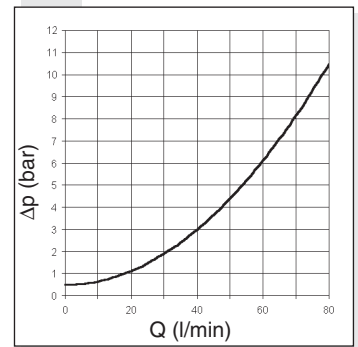
AM	Modular valve
5	CETOP 5/NG10
QF	Non compensated throttle valve
**	Control on lines A / B / P / AB
*	Type of adjustment M = Plastic knob C = Grub screw
**	00 = No variant V1 = Viton
4	Serial No.

FLOW RATE

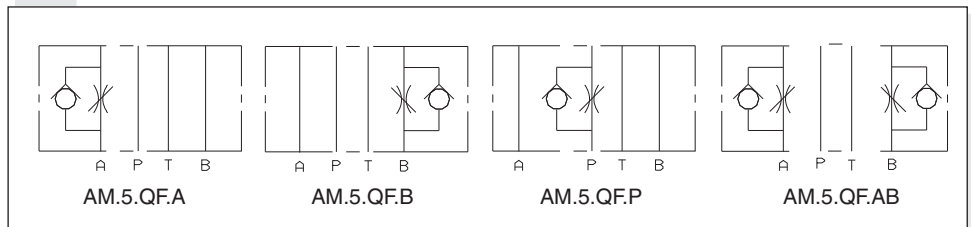


FREE FLOW

TOWARDS CHECK VALVE



HYDRAULIC SYMBOLS



OVERALL DIMENSIONS

